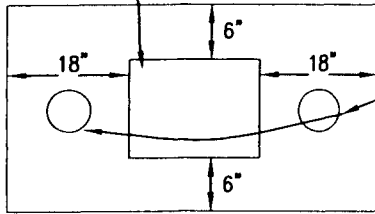


CHRISTY BOX



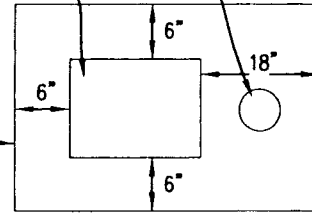
TOP VIEW OF AIR VALVE
WITH CONCRETE SLAB

DOUBLE COMBINATION AIR VALVE APPLICATION

CHRISTY CONCRETE
VALVE BOX & LID AT
CURB STOP OR CITY
APPROVED EQUAL

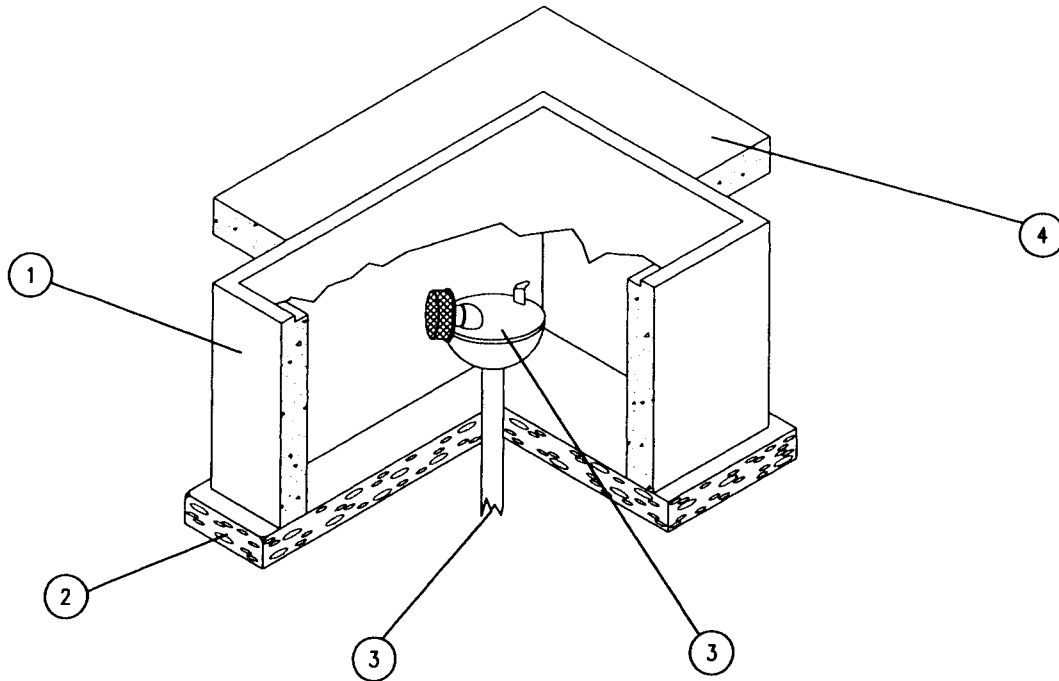
OUTLINE OF 4"
THICK CONCRETE
SLAB

CHRISTY BOX



TOP VIEW OF AIR VALVE
WITH CONCRETE SLAB

SINGLE COMBINATION AIR VALVE APPLICATION




NOTES:

1. CHRISTY BOX B-36 WITH LID B-36D OR CITY APPROVED EQUAL. THE TOP OF THE LID SHALL BE FLUSH WITH THE TOP OF THE CONCRETE SLAB.
2. DRAIN ROCK. PROVIDE 5 CUBIC FEET PER VAULT BOX.
3. SEE DETAIL W14 & W15 FOR ADDITIONAL INFORMATION.
4. 4" THICK CONCRETE SLAB ON GRADE. THE CONCRETE SHALL BE WIDER THAN THE BOX ON ALL SIDES AS SHOWN ABOVE.

**BELOW GROUND INSTALLATION
COMBINATION AIR VALVE**

DATE	REVISIONS	BY

CITY OF YUBA CITY	
STANDARD DETAIL	
W16	
APPROVED	DATE
	7/21/09